

SUBSTANCE ABUSE TREATMENT RESOURCES REFERRAL MANUAL



Original By: Cory Nicolas (2012)

Revised By: Yvonne Haxton, August 2013

Current Revision By: Casha Demello, August 2015

Chaminade University of Honolulu

Editor: Ronnie Mulford, Ph.D.

TABLE OF CONTENTS

OAHU	Action With Aloha.....	4
	Alcoholic Rehab Services of Hawaii.....	4
	Army Substance Abuse Program.....	4
	Bobby Benson Center.....	5
	Care Hawaii.....	5
	Coalition For A Dug Free Hawaii.....	6
	Comprehensive Health and Attitude Management Program.....	6
	Department of Veterans Affairs.....	6
	Gateway Educational Services.....	7
	Habilitat.....	7
	Hawaii Counseling and Education Center.....	7
	Helping Hands Hawaii.....	7
	Hina Mauka / Teen Care.....	8
	Ho’omau Ke Ola.....	10
	Kaiser Permanente.....	10
	Kline Welsh Behavioral Health Foundation.....	11
	Ku Aloha Ola Maui.....	11
	McKenna Recovery Center.....	11
	Naval Health Clinic.....	11
	New Horizons Counseling.....	12
	Oxford House Inc.	12
	Poailani Inc.....	12
	Queens Medical Center.....	13

	Salvation Army Addiction Treatment Services.....	13
	State of Hawaii Judiciary.....	13
	Substance Abuse Counseling Center.....	14
	VA Pacific Islands Healthcare Services.....	14
	YMCA.....	14
MAUI	Aloha House Inc.....	17
	Hale Hookupaa.....	18
	Ka Hale Pomaikai.....	18
	Kaiser Permanente.....	18
	Malama Na Makua A Keiki.....	19
	Maui Youth and Family Services Inc.....	19
	Ohana Makamae Inc.....	19
	ReSolution Counseling.....	19
HAWAII	Big Island Substance Abuse Council.....	20
	Hui Ho ola O Na Nahulu.....	25
	Ku Aloha Ola Mau Inc.....	25
	Lokahi Treatment Center.....	26
KAUAI	Child and Family Services.....	27
	Hina Mauka / Teen Care.....	27
	Kauai Veterans.....	28
	McKenna Recovery Center.....	29
LANAI	Aloha House Inc.....	29

**** The listings in this community referral resource manual are for reference only, and are not intended to be an endorsement, nor offer or replace medical advice.**

OAHU

Action With Aloha	98-1256 Kaahumanu St. Suite E301 Pearl City, HI 96782	(808) 484-4489	www.actionwithaloha.com
Primary Focus:	Substance abuse treatment services		
Services Provided:	Substance abuse treatment,		
Type of Care:	Outpatient		
Special Programs/Groups:	Persons with co-occurring mental and substance abuse disorders, Criminal justice clients		
Forms of Payment Accepted:	Self payment, Medicaid, State financed insurance (other than Medicaid), Private health insurance		
Alcoholic Rehab Services of Hawaii Inc DBA Hina Mauka Adult Continuum	45-845 Po'okela Street Kaneohe, HI 96744	(808) 236-2600 Intakes: (808) 236-2600x223 (808) 236-2600x246	www.hinamauka.org
Primary Focus:	Substance abuse treatment services		
Services Provided:	Substance abuse treatment, Buprenorphine Services		
Type of Care:	Residential short-term treatment (30 days or less), Residential long-term treatment (more than 30 days), Outpatient, Partial hospitalization/day treatment		
Special Programs/Groups:	Persons with co-occurring mental and substance abuse disorders, Criminal justice clients		
Forms of Payment Accepted:	Self payment, Medicaid, State financed insurance (other than Medicaid), Private health insurance, Access to Recovery		
Alcoholic Rehab Services of Hawaii Inc Hina Mauka/IHS	350 Sumner Street Honolulu, HI 96817	(808) 447-2913 Intake: (808) 447-2914	www.hinamauka.org
Primary Focus:	Substance abuse treatment services		
Services Provided:	Substance abuse treatment		
Type of Care:	Outpatient		
Army Substance Abuse Program (ASAP) CDR USAG	556 Heard St, Building 673 Stop 129 Schofield Barracks, HI 96857	(808) 433-8700	www.garrison.hawaii.mil
Primary Focus:	Substance abuse treatment services		
Services Provided:	Substance abuse treatment, Detoxification		
Type of Care:	Outpatient, Partial hospitalization/day treatment		
Special Programs/Groups:	DUI/DWI offenders		
Forms of Payment Accepted:	Private health insurance, Military insurance (e.g., VA, TRICARE)		
Exclusive Services:	Active duty only		

Big Island Substance Abuse Council Kapolei Program Office	1075 Shangrila Road Building 37 Room 141 Kapolei, HI 96707	(808) 969-9994	www.bisac.org
Primary Focus:	Substance abuse treatment services		
Services Provided:	Substance abuse treatment		
Type of Care:	Outpatient		
Forms of Payment Accepted:	Self payment, Medicaid, State financed insurance (other than Medicaid), Private health insurance, Access to Recovery		
Payment Assistance:	Sliding fee scale (fee is based on income and other factors)		
Bobby Benson Center	56-660 Kamehameha Highway Kahuku, HI 96731	(808) 293-7555	www.bobbybenson.org
Primary Focus:	Substance abuse treatment services		
Services Provided:	Substance abuse treatment, Detoxification		
Type of Care:	Residential short-term treatment (30 days or less), Residential long-term treatment (more than 30 days), Outpatient, Partial hospitalization/day treatment		
Special Programs/Groups:	Adolescents		
Forms of Payment Accepted:	Self payment, State financed insurance (other than Medicaid), Private health insurance, Access to Recovery		
Care Hawaii Ala Nui Adolescent IOP/OP	875 Waimanu Street, Suite 606 Honolulu, HI 96813	(808) 533-3936 Intake: (808) 791-6088	www.carehawaii.com
Primary Focus:	Substance abuse treatment services		
Services Provided:	Substance abuse treatment		
Type of Care:	Outpatient		
Special Programs/Groups:	Adolescents		
Forms of Payment Accepted:	Self payment, Medicaid, Medicare, State financed insurance (other than Medicaid), Private health insurance, Military insurance (e.g., VA, TRICARE)		
Payment Assistance:	Payment assistance (Check with facility for details)		
Care Hawaii Inc Adolescent IOP/OP	46-022 Alaloa Street, Suite 201 Kaneohe, HI 96744	(808) 234-5825	www.carehawaii.com
Primary Focus:	Substance abuse treatment services		
Services Provided:	Substance abuse treatment		
Type of Care:	Outpatient		
Special Programs/Groups:	Adolescents		
Forms of Payment Accepted:	Self payment, Medicaid, Medicare, State financed insurance (other than Medicaid), Private health insurance, Military insurance (e.g., VA, TRICARE)		
Payment Assistance:	Payment assistance (Check with facility for details)		

Coalition For A Drug Free Hawaii School Based/Leilehua High School	1515 California Avenue Wahiawa, HI 96786	(808) 545-3228x29 Intake: (808) 848-2494	www.ymacahonolulu.org
Primary Focus:	Substance abuse treatment services		
Services Provided:	Substance abuse treatment		
Type of Care:	Outpatient		
Special Programs/Groups:	Adolescents, Persons with HIV/AIDS, Gays and Lesbians		
Payment Assistance:	Payment assistance (Check with facility for details)		
Coalition For A Drug Free Hawaii Wahiawa Middle School	275 Rose Street Wahiawa, HI 96786	(808) 545-3228x29	www.drugfreehawaii.org
Primary Focus:	Substance abuse treatment services		
Services Provided:	Substance abuse treatment		
Type of Care:	Outpatient		
Special Programs/Groups:	Adolescents		
Payment Assistance:	Payment assistance (Check with facility for details)		
Comprehensive Health and Attitude Management Program Inc (CHAMP)	173 South Kukui Street Honolulu, HI 96813	(808) 426-4515 Intake: (808) 528-0550	www.champclinic.com
Primary Focus:	Substance abuse treatment services		
Services Provided:	Substance abuse treatment, Methadone Maintenance, Methadone Detoxification		
Type of Care:	Outpatient		
Special Programs/Groups:	Persons with co-occurring mental and substance abuse disorders, Persons with HIV/AIDS, Pregnant/postpartum women, Criminal justice clients		
Forms of Payment Accepted:	Self payment, Medicaid		
Special Language Services:	German, Tagalog		
Exclusive Services:	Methadone Clients Only		
Department of Veterans Affairs Substance Abuse Treatment Program 116	459 Patterson Road Honolulu, HI 96819	(808) 433-0660	www.hawaii.va.gov/
Primary Focus:	Substance abuse treatment services		
Services Provided:	Substance abuse treatment		
Type of Care:	Outpatient		
Special Programs/Groups:	Persons with co-occurring mental and substance abuse disorders		
Forms of Payment Accepted:	Military insurance (e.g., VA, TRICARE)		

Gateway Educational Services	1803 N. King Street Honolulu, HI 96819	(808) 842-5777	www.gatewayeducationalservices.org
Primary Focus:	Substance abuse treatment services		
Services Provided:	Substance abuse treatment		
Type of Care:	Outpatient		
Special Programs/Groups:	Persons with co-occurring mental and substance abuse disorders		
Forms of Payment Accepted:	Access To Recovery		
Special Language Services:	Tagalog		
Habilitat Inc	45-035 Kuhonu Place Kaneohe, HI 96744	(808) 235-3691	www.habilitat.com
Primary Focus:	Substance abuse treatment services		
Services Provided:	Substance abuse treatment		
Type of Care:	Residential long-term treatment (more than 30 days)		
Forms of Payment Accepted:	Self payment		
Payment Assistance:	Payment assistance (Check with facility for details)		
Hawaii Counseling and Educ Center Inc Chemical Dependency Outpt Treatment	970 North Kalaheo Avenue, Suite A-213 Kailua, HI 96734	(808) 254-6484	www.hcechawaii.com
Primary Focus:	Mental health services		
Services Provided:	Substance abuse treatment		
Type of Care:	Outpatient		
Forms of Payment Accepted:	Self payment, Medicaid, State financed insurance (other than Medicaid), Private health insurance, Military insurance (e.g., VA, TRICARE)		
Helping Hands Hawaii IOP/OP	2100 North Nimitz Highway Honolulu, HI 96819	(808) 536-7234 Intake: (808) 845-2018	www.helpinghandshawaii.org
Primary Focus:	Mix of mental health and substance abuse services		
Services Provided:	Substance abuse treatment		
Type of Care:	Outpatient, Partial hospitalization/day treatment		
Special Programs/Groups:	Persons with co-occurring mental and substance abuse disorders, Criminal justice clients		
Forms of Payment Accepted:	Medicaid, Medicare, State financed insurance (other than Medicaid)		
Special Language Services:	ASL or other assistance for hearing impaired		

Hina Mauka/Teen Care Castle High School	45-386 Kaneohe Bay Drive Kaneohe, HI 96744	(808) 233-5600x2312 Intake: (808) 233-5613	www.hinamauka.org
Primary Focus:	Substance abuse treatment services		
Services Provided:	Substance abuse treatment		
Type of Care:	Outpatient		
Special Programs/Groups:	Adolescents		
Hina Mauka/Teen Care Kahuku High and Intermediate School	56-490 Kamehameha Highway Kahuku, HI 96731	(808) 293-8910x231 Intake: (808) 293-4111	www.hinamauka.org
Primary Focus:	Substance abuse treatment services		
Services Provided:	Substance abuse treatment		
Type of Care:	Outpatient		
Special Programs/Groups:	Adolescents		
Hina Mauka/Teen Care Aliamanu Middle School	3271 Salt Lake Boulevard Honolulu, HI 96818	(808) 421-4100x256 Intake: (808) 421-4100x256	www.hinamauka.org
Primary Focus:	Substance abuse treatment services		
Services Provided:	Substance abuse treatment		
Type of Care:	Outpatient		
Special Programs/Groups:	Adolescents		
Hina Mauka/Teen Care Radford High School	4361 Salt Lake Boulevard Honolulu, HI 96818	(808) 421-4200x256 Intake: (808) 421-4200x283	www.hinamauka.org
Primary Focus:	Substance abuse treatment services		
Services Provided:	Substance abuse treatment		
Type of Care:	Outpatient		
Special Programs/Groups:	Adolescents		
Hina Mauka/Teen Care King Intermediate School	46-155 Kamehameha Highway Kaneohe, HI 96744	(808) 233-5727x266	www.hinamauka.org
Primary Focus:	Substance abuse treatment services		
Services Provided:	Substance abuse treatment		
Type of Care:	Outpatient		
Special Programs/Groups:	Adolescents		

Hina Mauka/Teen Care Mililani Middle School	95-1140 Lehiwa Drive Mililani, HI 96789	(808) 626-7355x568	www.hinamauka.org
Primary Focus: Substance abuse treatment services Services Provided: Substance abuse treatment Type of Care: Outpatient Special Programs/Groups: Adolescents			
Hina Mauka/Teen Care Mililani High School	95-1200 Meheula Parkway Mililani, HI 96789	(808) 627-4294 Intake: (808) 627-7747x2347	www.hinamauka.org
Primary Focus: Substance abuse treatment services Services Provided: Substance abuse treatment Type of Care: Outpatient Special Programs/Groups: Adolescents			
Hina Mauka/Teen Care Pearl City High School	2100 Hookiekie Street Pearl City, HI 96782	(808) 454-5553	www.hinamauka.org
Primary Focus: Substance abuse treatment services Services Provided: Substance abuse treatment Type of Care: Outpatient Special Programs/Groups: Adolescents			
Hina Mauka/Teen Care Kailua Intermediate School	145 South Kainalu Street Kailua, HI 96734	(808) 263-1500	www.hinamauka.org
Primary Focus: Substance abuse treatment services Services Provided: Substance abuse treatment Type of Care: Outpatient Special Programs/Groups: Adolescents			
Hina Mauka/Teen Care Olomana High School	42-471 Kalaniana'ole Highway Kailua, HI 96734	(808) 266-7874	www.hinamauka.org
Primary Focus: Substance abuse treatment services Services Provided: Substance abuse treatment Type of Care: Outpatient Special Programs/Groups: Adolescents			

Hina Mauka/Teen Care Kalaheo High School	730 Iliaina Street Kailua, HI 96734	(808) 254-7923	www.hinamauka.org
Primary Focus: Substance abuse treatment services Services Provided: Substance abuse treatment Type of Care: Outpatient Special Programs/Groups: Adolescents			
Hina Mauka/Teen Care Kalani High School	4680 Kalaniana'ole Highway Honolulu, HI 96821	(808) 216-1425 Intake: (808) 377-7744x293	www.hinamauka.org
Primary Focus: Substance abuse treatment services Services Provided: Substance abuse treatment Type of Care: Outpatient Special Programs/Groups: Adolescents			
Ho'omau Ke Ola	85-761 Farrington Hwy, Ste 103 Waianae, HI 96792	(808) 696-4266 Intake: 696-3315	www.hoomaukeola.org
Primary Focus: Culture-based substance abuse treatment center Services Provided: Drug abuse counseling Type of Care: Residential and Outpatient Special Programs/Groups: Holistic approach to healing and culturally relevant treatment modalities based on traditional Hawaiian attitudes, values, and practices. Forms of Payment Accepted: Self payment, Medicaid, State financed insurance (other than Medicaid), Private health insurance			
Kaiser Permanente Behavioral Health Services	1441 Kapiolani Boulevard Suite 1600 Honolulu, HI 96814	(808) 432-7600x7639 Intake: (808) 432-7600 Hotline: (808) 432-7600	www.kp.org
Primary Focus: Mix of mental health and substance abuse services Services Provided: Substance abuse treatment Type of Care: Outpatient Forms of Payment Accepted: Medicaid, Medicare, Private health insurance Special Language Services: ASL or other assistance for hearing impaired, Chinese, Japanese			

Kline Welsh Behavioral Health Foundation Sand Island Treatment Center	1240 Sand Island Parkway Honolulu, HI 96819	(808) 841-2319 Intake: (808) 841-3915 Hotline: (808) 841-2319	www.sandisland.com
Primary Focus:	Mix of mental health and substance abuse services		
Services Provided:	Substance abuse treatment		
Type of Care:	Residential long-term treatment (more than 30 days)		
Special Programs/Groups:	Persons with co-occurring mental and substance abuse disorders, Persons with HIV/AIDS, Pregnant/postpartum women, Women, Men, Criminal justice clients		
Forms of Payment Accepted:	Self payment, State financed insurance (other than Medicaid), Private health insurance, Access to Recovery		
Payment Assistance:	Sliding fee scale (fee is based on income and other factors), Payment assistance (Check with facility for details)		
Special Language Services:	ASL or other assistance for hearing impaired, Spanish, Tagalog		
Ku Aloha Ola Mau Methadone Maintenance	1130 North Nimitz Highway, Suite C-302 Honolulu, HI 96817	(808) 538-0704	www.kualoha.org
Primary Focus:	Substance abuse treatment services		
Services Provided:	Substance abuse treatment, Detoxification, Methadone Maintenance, Methadone Detoxification, Buprenorphine Services		
Type of Care:	Outpatient		
Special Programs/Groups:	Adolescents, Persons with co-occurring mental and substance abuse disorders, Women, Men		
Forms of Payment Accepted:	Self payment, Medicaid, State financed insurance (other than Medicaid), Private health insurance, Military insurance (e.g., VA, TRICARE)		
Payment Assistance:	Payment assistance (Check with facility for details)		
Exclusive Services:	Methadone and Buprenorphine Clients Only		
Mckenna Recovery Center Ke Ala Pono - Oahu	1314 S. King St, Ste 962 Honolulu, HI 96814	(808) 591-0921	www.mckennarecoverycenter.com
Primary Focus:	Substance abuse treatment services		
Services Provided:	Substance abuse treatment, detoxification, buprenorphine services		
Type of Care:	Outpatient		
Special Programs/Groups:	Adults and professionals		
Forms of Payment Accepted:	Self payment, Medicaid, State financed insurance (other than Medicaid), Private health insurance, Military insurance (i.e. VA, TRICARE)		
Naval Health Clinic Substance Abuse Rehabilitation Program	480 Central Avenue Pearl Harbor, HI 96860	(808) 473-0650 Intake: (808) 471-9002x450	www.med.navy.mil
Primary Focus:	Substance abuse treatment services		
Services Provided:	Substance abuse treatment		
Type of Care:	Outpatient		
Forms of Payment Accepted:	Military insurance (e.g., VA, TRICARE)		

		(808) 484-1000	
New Horizons Counseling	95-580 Naholoholo Street Mililani, HI 96789	Intake: (808) 696-2668 Hotline: (808) 484-1000	www.newhorizonshawaii.com/
Primary Focus:	Substance abuse treatment services		
Services Provided:	Substance abuse treatment		
Type of Care:	Outpatient		
Special Programs/Groups:	DUI/DWI offenders		
Forms of Payment Accepted:	Self payment		
Oxford House, Inc.	350 Ward Ave., Ste 106-9 Honolulu, HI 96814	(808) 957-0324	www.oxfordhousehi.org
Primary Focus:	Substance abuse treatment services		
Services Provided:	Substance abuse treatment, Detoxification		
Type of Care:	Inpatient, recovery group homes		
Special Programs/Groups:			
Forms of Payment Accepted:	Self payment, Medicaid, State financed insurance (other than Medicaid), Private health insurance		
PoAilani Inc Dual Diagnosis Program	553 Kawainui Street Kailua, HI 96734	(808) 263-1065 Intake: (808) 262-2799	www.poailani.org
Primary Focus:	Mix of mental health and substance abuse services		
Services Provided:	Substance abuse treatment		
Type of Care:	Residential long-term treatment (more than 30 days)		
Special Programs/Groups:	Persons with co-occurring mental and substance abuse disorders		
Forms of Payment Accepted:	Self payment, Medicaid, Medicare, State financed insurance (other than Medicaid), Private health insurance, Military insurance (e.g., VA, TRICARE), Access to Recovery		
Special Language Services:	ASL or other assistance for hearing impaired		
PoAilani Inc Outpatient Clinic	74 Kihapai Street Kailua, HI 96734	(808) 261-8741x708 Intake: (808) 262-2799	www.poailani.org
Primary Focus:	Mix of mental health and substance abuse services		
Services Provided:	Substance abuse treatment		
Type of Care:	Outpatient, Partial hospitalization/day treatment		
Special Programs/Groups:	Persons with co-occurring mental and substance abuse disorders		
Forms of Payment Accepted:	Self payment, Medicaid, Medicare, State financed insurance (other than Medicaid), Private health insurance, Access to Recovery		
Special Language Services:	ASL or other assistance for hearing impaired		

Queens Medical Center Day Treatment Services	1374 Nuuanu Avenue Kaheihemalie Building 2nd Floor Honolulu, HI 96817	(808) 691-4352 Intake: (808) 547-4352	www.queensmedicalcenter.org
Primary Focus:	Mix of mental health and substance abuse services		
Services Provided:	Substance abuse treatment		
Type of Care:	Outpatient, Partial hospitalization/day treatment		
Special Programs/Groups:	Persons with co-occurring mental and substance abuse disorders, Criminal justice clients		
Forms of Payment Accepted:	Self payment, Medicare, State financed insurance (other than Medicaid), Private health insurance		
Salvation Army Addiction Tx Services Continuum of Care Program	3624 Waokanaka Street Honolulu, HI 96817	(808) 595-6371	www.hawaii.salvationarmy.org
Primary Focus:	Substance abuse treatment services		
Services Provided:	Substance abuse treatment, Detoxification, Buprenorphine Services		
Type of Care:	Residential short-term treatment (30 days or less), Residential long-term treatment (more than 30 days), Outpatient, Partial hospitalization/day treatment		
Special Programs/Groups:	Women, Men, Criminal justice clients		
Forms of Payment Accepted:	Self payment, State financed insurance (other than Medicaid), Private health insurance		
Payment Assistance:	Payment assistance (Check with facility for details)		
Special Language Services:	ASL or other assistance for hearing impaired		
Salvation Army Family Treatment Servs Womens Way	845 22nd Avenue Honolulu, HI 96816	(808) 732-2802 Intake: (808) 732-2802x252	www.hawaii.salvationarmy.org
Primary Focus:	Substance abuse treatment services		
Services Provided:	Substance abuse treatment, Detoxification, Halfway house, Buprenorphine Services		
Type of Care:	Residential short-term treatment (30 days or less), Residential long-term treatment (more than 30 days), Outpatient		
Special Programs/Groups:	Pregnant/postpartum women, Women, Residential beds for clients' children		
Forms of Payment Accepted:	Self payment, Medicaid, State financed insurance (other than Medicaid), Private health insurance, Access to Recovery		
Payment Assistance:	Payment assistance (Check with facility for details)		
State of Hawaii Judiciary Hawaii Drug Court	777 Punchbowl Street, 2nd Floor Honolulu, HI 96813	(808) 599-3700	www.courts.state.hi.us
Primary Focus:	Mix of mental health and substance abuse services		
Services Provided:	Substance abuse treatment		
Type of Care:	Outpatient, Partial hospitalization/day treatment		
Special Programs/Groups:	Persons with co-occurring mental and substance abuse disorders, Criminal justice clients		
Forms of Payment Accepted:	Self payment		
Payment Assistance:	Payment assistance (Check with facility for details)		
Special Language Services:	ASL or other assistance for hearing impaired, Tagalog, Thai, Vietnamese		

Substance Abuse Counseling Center	Marine Corps Base Hawaii M C B H Kaneohe Bay, HI 96863	(808) 257-3900	www.mccshawaii.com/substance.htm
<p>Primary Focus: Substance abuse treatment services Services Provided: Substance abuse treatment Type of Care: Outpatient Form of Payment: Military Insurance (VA, Tricare)</p>			
VA Pacific Islands Healthcare Services Intensive Outpatient SATP	459 Patterson Road, Bldg 30 Honolulu, HI 96819	(808) 433-0660	www.hawaii.va.gov
<p>Primary Focus: Mix of mental health and substance abuse services Services Provided: Substance abuse treatment Type of Care: Outpatient, Partial hospitalization/day treatment Special Programs/Groups: Persons with co-occurring mental and substance abuse disorders Forms of Payment Accepted: Self payment, Private health insurance Payment Assistance: Payment assistance (Check with facility for details) Special Language Services: ASL or other assistance for hearing impaired</p>			
YMCA Outreach Services School Based/Aiea High School	98-1276 Ulune Street Aiea, HI 96701	(808) 848-2494	www.ymcahonolulu.org
<p>Primary Focus: Substance abuse treatment services Services Provided: Substance abuse treatment Type of Care: Outpatient Special Programs/Groups: Adolescents Payment Assistance: Payment assistance (Check with facility for details)</p>			
YMCA of Honolulu Aiea Intermediate School	99-600 Kulawea Street Aiea, HI 96701	(808) 848-2494	www.ymcahonolulu.org
<p>Primary Focus: Substance abuse treatment services Services Provided: Substance abuse treatment Type of Care: Outpatient Special Programs/Groups: Adolescents Payment Assistance: Payment assistance (Check with facility for details)</p>			
YMCA Outreach Services School Based/Campbell High School	91-980 North Road Ewa Beach, HI 96706	(808) 848-2494	www.ymcahonolulu.org
<p>Primary Focus: Substance abuse treatment services Services Provided: Substance abuse treatment Type of Care: Outpatient Special Programs/Groups: Adolescents Payment Assistance: Payment assistance (Check with facility for details)</p>			

YMCA of Honolulu Central Middle School	1302 Queen Emma Street Honolulu, HI 96813	(808) 848-2494	www.ymcahonolulu.org
Primary Focus:	Substance abuse treatment services		
Services Provided:	Substance abuse treatment		
Type of Care:	Outpatient		
Special Programs/Groups:	Adolescents, Persons with co-occurring mental and substance abuse disorders, Persons with HIV/AIDS, Gays and Lesbians, Criminal justice clients		
Payment Assistance:	Payment assistance (Check with facility for details)		
YMCA Outreach Services School Based/Farrington High School	1564 North King Street Honolulu, HI 96819	(808) 848-2494	www.ymcahonolulu.org
Primary Focus:	Substance abuse treatment services		
Services Provided:	Substance abuse treatment		
Type of Care:	Outpatient		
Special Programs/Groups:	Adolescents		
Payment Assistance:	Payment assistance (Check with facility for details)		
YMCA of Honolulu Ilima Intermediate School	91-884 Fort Weaver Road Ewa Beach, HI 96706	(808) 848-2494	www.ymcahonolulu.org
Primary Focus:	Substance abuse treatment services		
Services Provided:	Substance abuse treatment		
Type of Care:	Outpatient		
Special Programs/Groups:	Adolescents		
Payment Assistance:	Payment assistance (Check with facility for details)		
YMCA of Honolulu Dole Middle School	1803 Kam Iv Road Honolulu, HI 96819	(808) 848-2494	www.ymcahonolulu.org
Primary Focus:	Substance abuse treatment services		
Services Provided:	Substance abuse treatment		
Type of Care:	Outpatient		
Special Programs/Groups:	Adolescents		
Payment Assistance:	Payment assistance (Check with facility for details)		
YMCA of Honolulu Kawananakoa Middle School	49 Funchal Street Honolulu, HI 96813	(808) 848-2494	www.ymcahonolulu.org
Primary Focus:	Substance abuse treatment services		
Services Provided:	Substance abuse treatment		
Type of Care:	Outpatient		
Special Programs/Groups:	Adolescents		
Payment Assistance:	Payment assistance (Check with facility for details)		

YMCA of Honolulu McKinley High School	1039 South King Street Honolulu, HI 96814	(808) 848-2494	www.ymcahonolulu.org
Primary Focus: Substance abuse treatment services Services Provided: Substance abuse treatment Type of Care: Outpatient Special Programs/Groups: Adolescents Payment Assistance: Payment assistance (Check with facility for details)			
YMCA of Honolulu Moanalua Middle School	1289 Mahiole Street Honolulu, HI 96819	(808) 848-2494	www.ymcahonolulu.org
Primary Focus: Substance abuse treatment services Services Provided: Substance abuse treatment Type of Care: Outpatient Special Programs/Groups: Adolescents, Persons with HIV/AIDS, Gays and Lesbians Payment Assistance: Payment assistance (Check with facility for details)			
YMCA of Honolulu Kapolei High School	91-5007 Kapolei Parkway Kapolei, HI 96707	(808) 848-2494	www.ymcahonolulu.org
Primary Focus: Substance abuse treatment services Services Provided: Substance abuse treatment Type of Care: Outpatient Special Programs/Groups: Adolescents Payment Assistance: Payment assistance (Check with facility for details)			
YMCA of Honolulu Kapolei Middle School	91-5335 Kapolei Parkway Kapolei, HI 96707	(808) 848-2494	www.ymcahonolulu.org
Primary Focus: Substance abuse treatment services Services Provided: Substance abuse treatment Type of Care: Outpatient Special Programs/Groups: Adolescents Payment Assistance: Payment assistance (Check with facility for details)			
YMCA Outreach Services School Based/Moanalua High School	2825 Ala Ilima Street Honolulu, HI 96819	(808) 848-2494	www.ymcahonolulu.org
Primary Focus: Substance abuse treatment services Services Provided: Substance abuse treatment Type of Care: Outpatient Special Programs/Groups: Adolescents Payment Assistance: Payment assistance (Check with facility for details)			

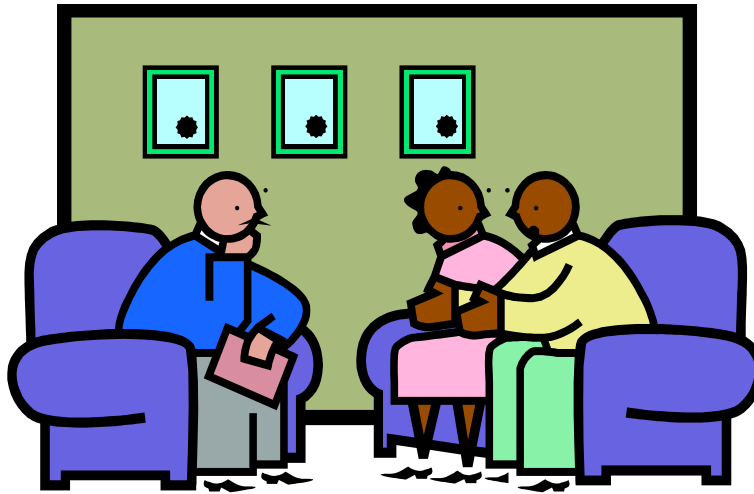
YMCA Outreach Services School Based/Roosevelt High School	1120 Nehoa Street Honolulu, HI 96813	(808) 848-2494	www.ymcahonolulu.org
Primary Focus:	Substance abuse treatment services		
Services Provided:	Substance abuse treatment		
Type of Care:	Outpatient		
Special Programs/Groups:	Adolescents		
Payment Assistance:	Payment assistance (Check with facility for details)		
YMCA of Honolulu Stevenson Middle School	1202 Prospect Street Honolulu, HI 96822	(808) 848-2494	www.ymcahonolulu.org
Primary Focus:	Substance abuse treatment services		
Services Provided:	Substance abuse treatment		
Type of Care:	Outpatient		
Special Programs/Groups:	Adolescents, Gays and Lesbians		
Payment Assistance:	Payment assistance (Check with facility for details)		
YMCA of Honolulu Kalakaua Middle School	821 Kalihi Street Honolulu, HI 96819	(808) 848-2494	www.ymcahonolulu.org
Primary Focus:	Substance abuse treatment services		
Services Provided:	Substance abuse treatment		
Type of Care:	Outpatient		
Special Programs/Groups:	Adolescents		
Payment Assistance:	Payment assistance (Check with facility for details)		
YMCA Outreach Services	1335 Kalihi Street Honolulu, HI 96819	(808) 848-2494	www.ymcahonolulu.org
Primary Focus:	Substance abuse treatment services		
Services Provided:	Substance abuse treatment		
Type of Care:	Outpatient		
Special Programs/Groups:	Adolescents, Criminal justice clients		
Payment Assistance:	Payment assistance (Check with facility for details)		

MAUI

Aloha House Inc Outpatient Services	250 Waiehu Beach Road Wailuku, HI 96793	(808) 242-9733 Intake: (808) 579-8414x8702	www.aloha-house.org
Primary Focus:	Substance abuse treatment services		
Services Provided:	Substance abuse treatment		
Type of Care:	Outpatient		
Special Programs/Groups:	Women, Men		
Forms of Payment Accepted:	Self payment, Private, Medicaid, State financed insurance (other than Medicaid)		

Aloha House Inc Adult Residential Treatment	4593 Ike Drive Makawao, HI 96768	(808) 579-9584 Intake: (808) 242-9733x32	www.aloha-house.org
<p>Primary Focus: Substance abuse treatment services</p> <p>Services Provided: Substance abuse treatment, Detoxification</p> <p>Type of Care: Residential short-term treatment (30 days or less), Residential long-term treatment (more than 30 days)</p> <p>Forms of Payment Accepted: Self payment, State financed insurance (other than Medicaid), Private health insurance, Military insurance (e.g., VA, TRICARE)</p> <p>Payment Assistance: Payment assistance (Check with facility for details)</p>			
Hale Hookupaa	450 Ala Malama Street Kaunakakai, HI 96748	(808) 553-3231	
<p>Services Provided: Substance abuse treatment</p> <p>Type of Care: Outpatient</p> <p>Special Programs/Groups: Adolescents, Persons with co-occurring mental and substance abuse disorders, DUI/DWI offenders</p> <p>Forms of Payment Accepted: Self payment</p> <p>Special Language Services: ASL or other assistance for hearing impaired</p>			
Ka Hale Pomaikai	372 Kamehameha V Highway Kaunakakai, HI 96748	(808) 558-8480x3 Intake: (808) 558-8480x5 Hotline: (808) 558-8480x5	www.kahalepomaikai.org
<p>Primary Focus: Substance abuse treatment services</p> <p>Services Provided: Substance abuse treatment, Halfway house</p> <p>Type of Care: Outpatient, Partial hospitalization/day treatment</p> <p>Special Programs/Groups: Persons with co-occurring mental and substance abuse disorders, DUI/DWI offenders, Criminal justice clients</p> <p>Forms of Payment Accepted: Self payment</p> <p>Payment Assistance: Payment assistance (Check with facility for details)</p> <p>Special Language Services: ASL or other assistance for hearing impaired</p>			
Kaiser Permanente Behavioral Health Services	2073 Wells Street, Suite 101 Wailuku, HI 96793	(808) 432-7600	www.kp.org
<p>Primary Focus: Mental health services</p> <p>Services Provided: Substance abuse treatment</p> <p>Type of Care: Outpatient</p> <p>Special Programs/Groups: Adolescents</p> <p>Forms of Payment Accepted: Medicaid, Medicare, Private health insurance</p> <p>Special Language Services: ASL or other assistance for hearing impaired, Chinese, Japanese, Tagalog</p>			

Malama Na Makua A Keiki DBA Malama Family Recovery Center	388 Ano Street Kahului, HI 96732	(808) 877-7117 Intake: (808) 242-9733	www.aloha-house.org/malama/malama1.html
Primary Focus: Substance abuse treatment services Services Provided: Substance abuse treatment Type of Care: Outpatient Special Programs/Groups: Women Forms of Payment Accepted: Self payment, State financed insurance (other than Medicaid), Private health insurance Payment Assistance: Payment assistance (Check with facility for details)			
Maui Youth and Family Services Inc Lahaina House IOP/OP	894 Kuhua Street Lahaina, HI 96761	(808) 579-8414	www.myfs.org
Primary Focus: Substance abuse treatment services Services Provided: Substance abuse treatment Type of Care: Outpatient Special Programs/Groups: Adolescents, Criminal justice clients Forms of Payment Accepted: Self payment, Medicaid, Private health insurance Payment Assistance: Payment assistance (Check with facility for details)			
Ohana Makamae Inc	39 Keanini Street Hana, HI 96713	(808) 248-8538	www.ohanamakamae.org
Primary Focus: Mix of mental health and substance abuse services Services Provided: Substance abuse treatment, Halfway house Type of Care: Outpatient Special Programs/Groups: Pregnant/postpartum women Forms of Payment Accepted: Self payment, Access to Recovery Payment Assistance: Sliding fee scale (fee is based on income and other factors), Payment assistance (Check with facility for details)			
ReSolution Counseling	2033 East Lelehuna Place Haiku, HI 96708	(574) 876-0711	
Primary Focus: Mix of mental health and substance abuse services Services Provided: Substance abuse treatment Type of Care: Outpatient Special Programs/Groups: Adolescents, Persons with co-occurring mental and substance abuse disorders, Persons with HIV/AIDS, Gays and Lesbians, Seniors/older adults, Pregnant/postpartum women, Women, Men, DUI/DWI offenders, Criminal justice clients Forms of Payment Accepted: Self payment			



HAWAII

Big Island Substance Abuse Council	136 Laukona Street Hilo, HI 96720	(808) 935-4927	www.bisac.org
------------------------------------	--------------------------------------	----------------	--

Services Provided: Halfway house

Big Island Substance Abuse Council Mens TLP 3	140 Puueo Street Hilo, HI 96720	(808) 969-9994	www.bisac.org
--	------------------------------------	----------------	--

Primary Focus: Substance abuse treatment services
Services Provided: Substance abuse treatment
Type of Care: Residential short-term treatment (30 days or less)
Special Programs/Groups: Men
Forms of Payment Accepted: Self payment, Medicaid, Medicare, Private health insurance, Access to Recovery

Big Island Substance Abuse Council School Based Program/Waiakea HS	155 West Kawili Street Hilo, HI 96720	(808) 969-9994 Intake: (808) 935-1902	www.bisac.org
---	--	--	--

Primary Focus: Substance abuse treatment services
Services Provided: Substance abuse treatment
Type of Care: Outpatient
Special Programs/Groups: Adolescents, Gays and Lesbians, Criminal justice clients

	200 West Puainako Street	(808) 938-6410	www.bisac.org
--	--------------------------	----------------	--

Big Island Substance Abuse Council Waiakea Intermediate School	Hilo, HI 96720	Intakes: (808) 969-9994x32 (808) 333-4408	
Primary Focus: Substance abuse treatment services Services Provided: Substance abuse treatment Type of Care: Outpatient Special Programs/Groups: Adolescents Payment Assistance: Payment assistance (Check with facility for details)			
Big Island Substance Abuse Council Program Office	297 Waiuanuenue Avenue Hilo, HI 96720	(808) 935-4927 Intake: (808) 969-1861	www.bisac.org
Primary Focus: Mix of mental health and substance abuse services Services Provided: Substance abuse treatment Type of Care: Outpatient Special Programs/Groups: DUI/DWI offenders Forms of Payment Accepted: Self payment, Medicaid, Medicare, State financed insurance (other than Medicaid), Private health insurance			
Big Island Substance Abuse Council School Based Prog/Hilo Interm School	587 Waiuanuenue Avenue Hilo, HI 96720	(808) 969-9994x826 Intake: (808) 933-0959	www.bisac.org
Primary Focus: Substance abuse treatment services Services Provided: Substance abuse treatment Type of Care: Outpatient Special Programs/Groups: Adolescents, Persons with co-occurring mental and substance abuse disorders, Criminal justice clients Payment Assistance: Payment assistance (Check with facility for details)			
Big Island Substance Abuse Council School Based Program/Honokaa HS	45-527 Pakalana Street Honokaa, HI 96727	(808) 640-3260 Intake: (808) 557-6627	www.bisac.org
Primary Focus: Substance abuse treatment services Services Provided: Substance abuse treatment Type of Care: Outpatient Payment Assistance: Payment assistance (Check with facility for details)			
Big Island Substance Abuse Council School Based Prog/Honokaa Middle Sch	45-527 Pakalana Street Honokaa, HI 96727	(808) 640-3260 Intake: (808) 557-6627	www.bisac.org
Primary Focus: Substance abuse treatment services Services Provided: Substance abuse treatment Type of Care: Outpatient Payment Assistance: Payment assistance (Check with facility for details)			

Big Island Substance Abuse Council School Based Program/Kealakehe HS	74-5000 Puohulihuli Street Kailua Kona, HI 96740	(808) 430-3347 Intake: (808) 327-4300x460	www.bisac.org
Primary Focus:	Substance abuse treatment services		
Services Provided:	Substance abuse treatment		
Type of Care:	Outpatient		
Special Programs/Groups:	Adolescents		
Forms of Payment Accepted:	Medicaid, Medicare		
Payment Assistance:	Payment assistance (Check with facility for details)		
Big Island Substance Abuse Council School Based Prog/Kealakehe Inter Sch	74-5062 Onipaa Street Kailua Kona, HI 96740	(808) 430-3347 Intake: (808) 938-3556	www.bisac.org
Primary Focus:	Substance abuse treatment services		
Services Provided:	Substance abuse treatment		
Type of Care:	Outpatient		
Special Programs/Groups:	Adolescents		
Forms of Payment Accepted:	Medicaid, Medicare		
Payment Assistance:	Payment assistance (Check with facility for details)		
Big Island Substance Abuse Council North Hawaii Facility	64-1040 Mamalahoa Highway Suite 101 Kamuela, HI 96743	(808) 887-2175	www.bisac.org
Primary Focus:	Substance abuse treatment services		
Services Provided:	Substance abuse treatment		
Type of Care:	Outpatient		
Special Programs/Groups:	DUI/DWI offenders		
Forms of Payment Accepted:	Self payment, Medicaid, Medicare, State financed insurance (other than Medicaid), Private health insurance		
Big Island Substance Abuse Council School Basd Prog/Waimea Middle School	67-1229 Mamalahoa Highway Kamuela, HI 96743	(808) 887-8138x268 Intake: (808) 936-3652	www.bisac.org
Primary Focus:	Substance abuse treatment services		
Services Provided:	Substance abuse treatment		
Type of Care:	Outpatient		
Special Programs/Groups:	Adolescents		
Payment Assistance:	Payment assistance (Check with facility for details)		
Big Island Substance Abuse Council School Based Prog/Kohala High School	54-3611 Akoni Pule Highway Kapaau, HI 96755	(808) 969-9994 Intake: (808) 936-4250	www.bisac.org
Primary Focus:	Substance abuse treatment services		
Services Provided:	Substance abuse treatment		
Type of Care:	Outpatient		
Payment Assistance:	Payment assistance (Check with facility for details)		

Big Island Substance Abuse Council School Based Program/Kohala Middle Sch	54-4155 Akoni Pule Highway Kapaau, HI 96755	(808) 969-9994 Intake: (808) 936-4250	www.bisac.org
Primary Focus: Substance abuse treatment services Services Provided: Substance abuse treatment Type of Care: Outpatient Special Programs/Groups: Adolescents Payment Assistance: Payment assistance (Check with facility for details)			
Big Island Substance Abuse Council School Based Prog/Keaau High School	16-0725 Keaau Paho Road Keaau, HI 96749	(808) 982-4220x2388 Intake: (808) 982-4220x2236	www.bisac.org
Primary Focus: Substance abuse treatment services Services Provided: Substance abuse treatment Type of Care: Outpatient Special Programs/Groups: Adolescents Payment Assistance: Payment assistance (Check with facility for details)			
Big Island Substance Abuse Council School Based Program/Keaau Middle	16-565 Keaau Paho Road Keaau, HI 96749	(808) 969-9994 Intake: (808) 982-8400x268	www.bisac.org
Primary Focus: Substance abuse treatment services Services Provided: Substance abuse treatment Type of Care: Outpatient Special Programs/Groups: Adolescents Payment Assistance: Payment assistance (Check with facility for details)			
Big Island Substance Abuse Council School Based Program/Konawaena HS	81-1041 Konawaena Road Kealakekua, HI 96750	(808) 969-9994 Intake: (808) 323-3268	www.bisac.org
Primary Focus: Substance abuse treatment services Services Provided: Substance abuse treatment Type of Care: Outpatient Special Programs/Groups: Adolescents Payment Assistance: Payment assistance (Check with facility for details)			
Big Island Substance Abuse Council Outpatient Treatment Kealakekua Office	81-947 Halekii Street Kealakekua, HI 96750	(808) 322-3100 Hotline: (800) 753-6879	www.bisac.org
Primary Focus: Substance abuse treatment services Services Provided: Substance abuse treatment Special Programs/Groups: Adolescents, Persons with co-occurring mental and substance abuse disorders, DUI/DWI offenders Forms of Payment Accepted: Self payment, Medicaid, Medicare, Private health insurance, Military insurance (e.g., VA, TRICARE)			

Big Island Substance Abuse Council School Based Program/ Laupahoehoe HS	35-2065 Old Manalao Highway Laupahoehoe, HI 96764	(808) 962-6148 Intake: (808) 935-4927	www.bisac.org
Primary Focus: Substance abuse treatment services Services Provided: Substance abuse treatment Type of Care: Outpatient Payment Assistance: Payment assistance (Check with facility for details)			
Big Island Substance Abuse Council School Based Prog/ Naalehu Inter School	95-5545 Mamalahoa Highway Naalehu, HI 96772	(808) 333-1895 Intake: (808) 929-9966	www.bisac.org
Primary Focus: Substance abuse treatment services Services Provided: Substance abuse treatment Type of Care: Outpatient Payment Assistance: Payment assistance (Check with facility for details)			
Big Island Substance Abuse Council Sch Based Prog/Paauilo Elem and Inter	43-1497 Old Main Road Paauilo, HI 96776	(808) 969-9994	www.bisac.org
Primary Focus: Substance abuse treatment services Services Provided: Substance abuse treatment Type of Care: Outpatient Special Programs/Groups: Adolescents Payment Assistance: Payment assistance (Check with facility for details)			
Big Island Substance Abuse Council School Based Program/Kau High School	96-3150 Pikaki Street Pahala, HI 96777	(808) 928-3005 Intake: (808) 969-9994x26	www.bisac.org
Primary Focus: Substance abuse treatment services Services Provided: Substance abuse treatment Type of Care: Outpatient Special Programs/Groups: Adolescents Payment Assistance: Payment assistance (Check with facility for details)			
Big Island Substance Abuse Council School Based Program/Pahala Inter Sch	96-3150 Pikaki Street Pahala, HI 96777	(808) 333-1895 Intake: (808) 928-2088	www.bisac.org
Primary Focus: Substance abuse treatment services Services Provided: Substance abuse treatment Type of Care: Outpatient Payment Assistance: Payment assistance (Check with facility for details)			

Big Island Substance Abuse Council School Based Program/Pahoa HS	15-3038 Puna Road Pahoa, HI 96778	(808) 935-4927 Intake: (808) 965-2161x243	www.bisac.org
Primary Focus:	Substance abuse treatment services		
Services Provided:	Substance abuse treatment		
Type of Care:	Outpatient		
Special Programs/Groups:	Adolescents		
Payment Assistance:	Payment assistance (Check with facility for details)		
Big Island Substance Abuse Council School Based Prog/Pahoa Interm School	15-3038 Puna Road Pahoa, HI 96778	(808) 965-2165x126 Intake: (808) 965-2161x243	www.bisac.org
Primary Focus:	Substance abuse treatment services		
Services Provided:	Substance abuse treatment		
Type of Care:	Outpatient		
Payment Assistance:	Payment assistance (Check with facility for details)		
Big Island Substance Abuse Council Sch Bsd Prg/Kalaniana'ole Ele and Inter	27-330 Old Mamalahoa Highway Papaikou, HI 96781	(808) 969-9994x826	www.bisac.org
Primary Focus:	Substance abuse treatment services		
Services Provided:	Substance abuse treatment		
Type of Care:	Outpatient		
Special Programs/Groups:	Adolescents, Persons with co-occurring mental and substance abuse disorders, Persons with HIV/AIDS, Gays and Lesbians, Criminal justice clients		
Payment Assistance:	Payment assistance (Check with facility for details)		
Hui Ho'ola O Na Nahulu O Hawaii	15-1926 Puakalo Keaau, HI 96749	(808) 982-9555	www.kualoha.org
Primary Focus:	Substance abuse treatment services		
Services Provided:	Substance abuse treatment		
Type of Care:	Outpatient		
Special Programs/Groups:	Women, Men		
Forms of Payment Accepted:	Self payment		
Ku Aloha Ola Mau Inc East Hawaii Treatment Clinic	900 Leilani Street Hilo, HI 96720	(808) 961-6822	www.kualoha.org
Primary Focus:	Substance abuse treatment services		
Services Provided:	Substance abuse treatment, Detoxification, Methadone Maintenance, Methadone Detoxification, Buprenorphine Services		
Type of Care:	Outpatient		
Forms of Payment Accepted:	Self payment, Medicaid, Medicare, State financed insurance (other than Medicaid), Private health insurance		
Special Language Services:	ASL or other assistance for hearing impaired		

Lokahi Treatment Centers	45-3544 Mamane Street Honokaa, HI 96727	(808) 775-7707	www.lokहितreatmentcenters.net
Primary Focus:	Mix of mental health and substance abuse services		
Services Provided:	Substance abuse treatment		
Type of Care:	Outpatient		
Special Programs/Groups:	Adolescents, Women, Men, DUI/DWI offenders, Criminal justice clients		
Forms of Payment Accepted:	Self payment, Medicaid, State financed insurance (other than Medicaid), Private health insurance, Military insurance (e.g., VA, TRICARE)		
Payment Assistance:	Sliding fee scale (fee is based on income and other factors), Payment assistance (Check with facility for details)		
Lokahi Treatment Centers Lohala Town Center	54-3886 Akoni Pule Highway Unit 6 Kapaau, HI 96755	(808) 889-5099 Intake: (808) 883-0922	www.lokहितreatmentcenters.net
Primary Focus:	Substance abuse treatment services		
Services Provided:	Substance abuse treatment		
Type of Care:	Outpatient		
Special Programs/Groups:	Adolescents, DUI/DWI offenders, Criminal justice clients		
Forms of Payment Accepted:	Self payment, State financed insurance (other than Medicaid), Private health insurance, Access to Recovery		
Payment Assistance:	Sliding fee scale (fee is based on income and other factors)		
Lokahi Treatment Centers Kona Office/Hillside Plaza	76-6225 Kuakini Highway Suite B-105 Kailua Kona, HI 96740	(808) 331-1175	www.lokहितreatmentcenters.net
Primary Focus:	Mix of mental health and substance abuse services		
Services Provided:	Substance abuse treatment, Buprenorphine Services		
Type of Care:	Outpatient		
Special Programs/Groups:	Adolescents, Persons with co-occurring mental and substance abuse disorders, Women, Men, DUI/DWI offenders, Criminal justice clients		
Forms of Payment Accepted:	Self payment, Medicaid, State financed insurance (other than Medicaid), Private health insurance		
Payment Assistance:	Sliding fee scale (fee is based on income and other factors), Payment assistance (Check with facility for details)		
Lokahi Treatment Centers Waiakea Villas	400 Hualani Street, Bldg 10-195-B Hilo, HI 96720	(808) 969-9292	www.lokहितreatmentcenters.net
Primary Focus:	Mix of mental health and substance abuse services		
Services Provided:	Substance abuse treatment		
Type of Care:	Outpatient		
Special Programs/Groups:	Adolescents, Men, DUI/DWI offenders, Criminal justice clients		
Forms of Payment Accepted:	Self payment, Medicaid, Private health insurance, Military insurance (e.g., VA, TRICARE)		
Payment Assistance:	Sliding fee scale (fee is based on income and other factors), Payment assistance (Check with facility for details)		



KAUAI

Child and Family Services	2970 Kele St, Ste 203 Lihue, HI 96766	(808) 245-5914	www.childandfamilyservice.org
Primary Focus:	Substance abuse		
Services Provided:	Substance abuse treatment		
Type of Care:	Outpatient		
Special Programs/Groups:	Individual and group counseling, pregnant and parenting women		
Forms of Payment Accepted:	Self payment, Medicaid, State financed insurance Private health insurance, Access to Recovery		
Hina Mauka/Teen Care Kamakehelei Middle School	4431 Nohou Street Lihue, HI 96766	(808) 241-3200x311 Intake: (808) 241-3200	www.hinamauka.org
Primary Focus:	Substance abuse treatment services		
Services Provided:	Substance abuse treatment		
Type of Care:	Outpatient		
Special Programs/Groups:	Adolescents		
Hina Mauka/Teen Care Kapaa High School	4695 Mailihuna Road Kapaa, HI 96746	(808) 821-4401x183 Intake: (808) 821-4401	www.hinamauka.org
Primary Focus:	Substance abuse treatment services		
Services Provided:	Substance abuse treatment		
Type of Care:	Outpatient		
Special Programs/Groups:	Adolescents		

Hina Mauka/Teen Care Kapaa Middle School	4867 Olohena Road Kapaa, HI 96746	(808) 821-4470x196	www.hinamauka.org
Primary Focus: Substance abuse treatment services Services Provided: Substance abuse treatment Type of Care: Outpatient Special Programs/Groups: Adolescents			
Hina Mauka/Teen Care Kauai High school	3577 Lala Road Lihue, HI 96766	(808) 274-3173x241	www.hinamauka.org
Primary Focus: Substance abuse treatment services Services Provided: Substance abuse treatment Type of Care: Outpatient Special Programs/Groups: Adolescents			
Hina Mauka/Teen Care Waimea Canyon Elem/Intermed School	9555 Huakai Road Waimea, HI 96796	(808) 338-6830x181	www.hinamauka.org
Primary Focus: Substance abuse treatment services Services Provided: Substance abuse treatment Type of Care: Outpatient Special Programs/Groups: Adolescents			
Hina Mauka/Teen Care Waimea High School	9707 Tsuchiya Road Waimea, HI 96796	(808) 338-6810x136	www.hinamauka.org
Primary Focus: Substance abuse treatment services Services Provided: Substance abuse treatment Type of Care: Outpatient Special Programs/Groups: Adolescents			
Kauai Veterans Center	3215 Kapule Hwy Lihue, HI 96766	(808) 246-1135	
Primary Focus: Substance abuse treatment services Services Provided: Substance abuse treatment Type of Care: Outpatient Special Programs/Groups: Individual and family counseling, group treatment (3 sessions/weekly), and PTSD treatment			

Forms of Payment Accepted: Self payment, Medicaid, Medicare, State financed insurance (other than Medicaid), Private health insurance, Military insurance (e.g., VA,TRICARE)			
Exclusive Services: Veterans only			
Mckenna Recovery Center Ke Ala Pono Kauai	4374 Kukui Grove Street, Ste 104 Lihue, HI 96766	(808) 246-0663	www.mckennarecoverycenter.com
Primary Focus: Substance abuse treatment services			
Services Provided: Substance abuse treatment, Detoxification, Buprenorphine Services			
Type of Care: Outpatient			
Special Programs/Groups: Adolescents			
Forms of Payment Accepted: Self payment, State financed insurance (other than Medicaid), Private health insurance, Military insurance (e.g., VA,TRICARE)			

LANAI

Aloha House Inc IOP/OP For Lanai	730 Lanai Avenue , Room 102 Lanai City, HI 96763	(808) 871-1314 Intake: (808) 565-9566 (808) 242-9733	www.aloha-house.org
Primary Focus: Substance abuse treatment services			
Services Provided: Substance abuse treatment			
Type of Care: Outpatient			
Forms of Payment Accepted: Self payment, State financed insurance (other than Medicaid), Private health insurance			
Payment Assistance: Payment assistance (Check with facility for details)			